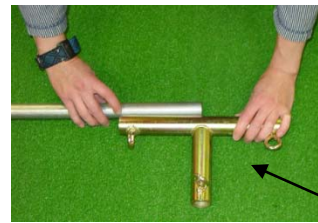
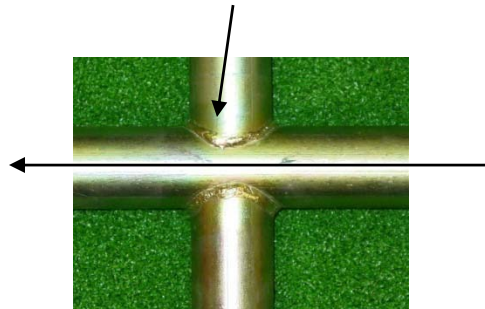


12' Cage Installation Instructions

Important Notes

- 1) The 5' long pipes are the for vertical sections only. The cage is 10' 3" tall.
- 2) The FX cross fittings should be oriented with the slide through running front to back.



- 3) When placing the pipe in the FC, FT & FX fittings, first lay the pipe next to the fitting, estimate where the pipe should stop to be centered. Either mark with a pen or hold your finger on the estimated stop point. Insert the pipe to this point and tighten the screw eye. Centering the pipes in the FC, FT & FX fittings will help keep the cage square.
- 4) There are two covers for this cage. The first cover, which is the inner cover, has the white impact projection screen built in. There are grommets on both ends of the screen. A rope is included which is to be threaded through the grommets and around both vertical pole at the back end of the cage. This will need to be loosened and tightened as the cage is assembled to keep the impact projection screen square. It will be easier to put the second, outer cover with the P3ProSwing Logo, on after the top frame is assembled.

Bill Of Materials:

Item Description	Qty
6' Pipe	22
5' Pipe	12
18" Pipe	5
4'6" Pipe	5
FC	9
FL	6
F4	4
FT	8
FX	3
F3 (not shown)	2
Side Guy Wire (black) Short (4) Long (4)	8
Rear Guy Wire (red)	2
Projector Mount Receiver	1



FC



FX



FL



Side Guy Wires

(black bands)

2 Sets, One Long &
One Short



F4



Rear Guy Wires

(red bands)



FT



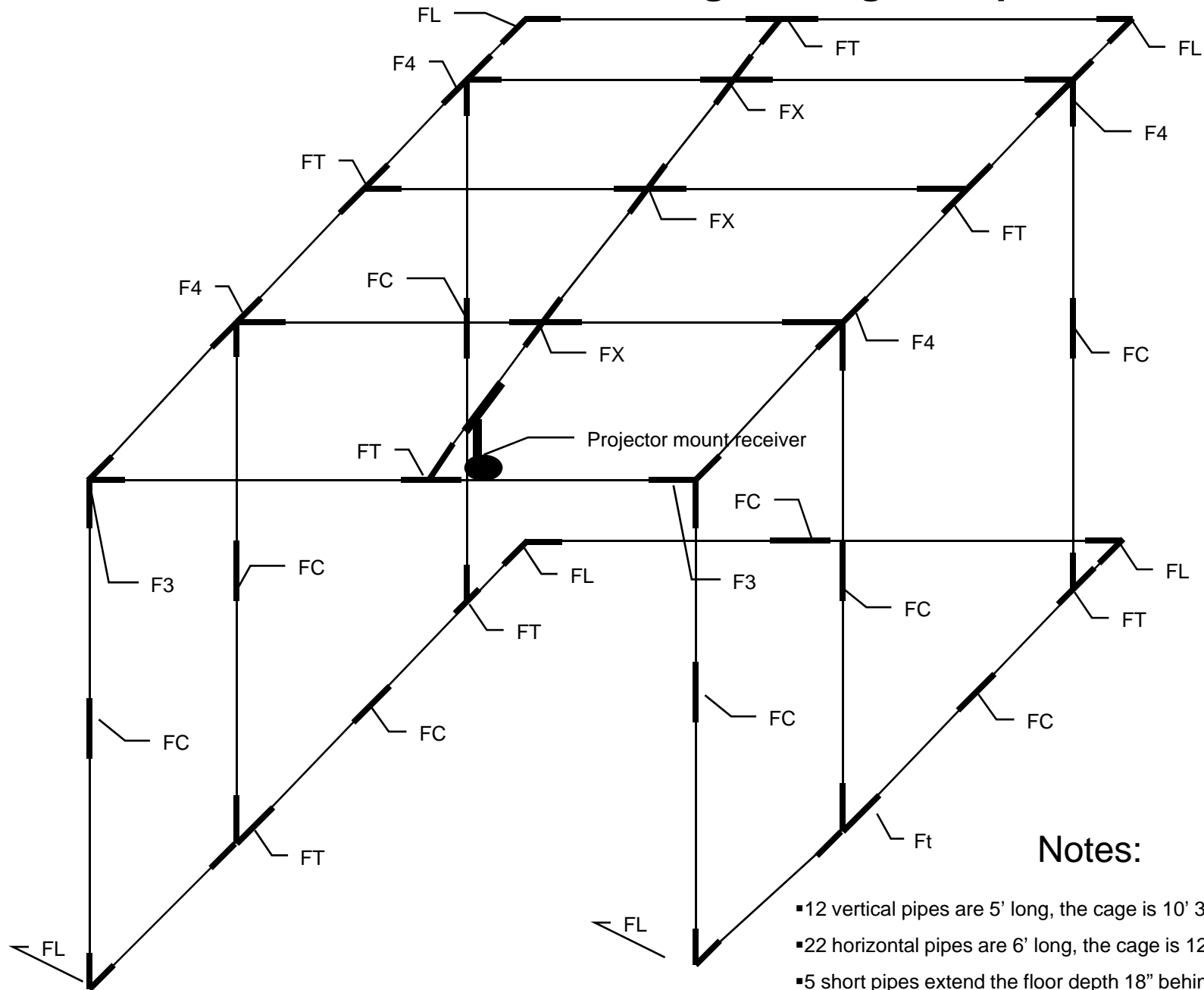
Projector Mount

Receiver

Will accept projector mounts
With 1 1/2" NPT Pipe Threads

Pipes not Pictured

Overview of Cage Fittings & Pipes



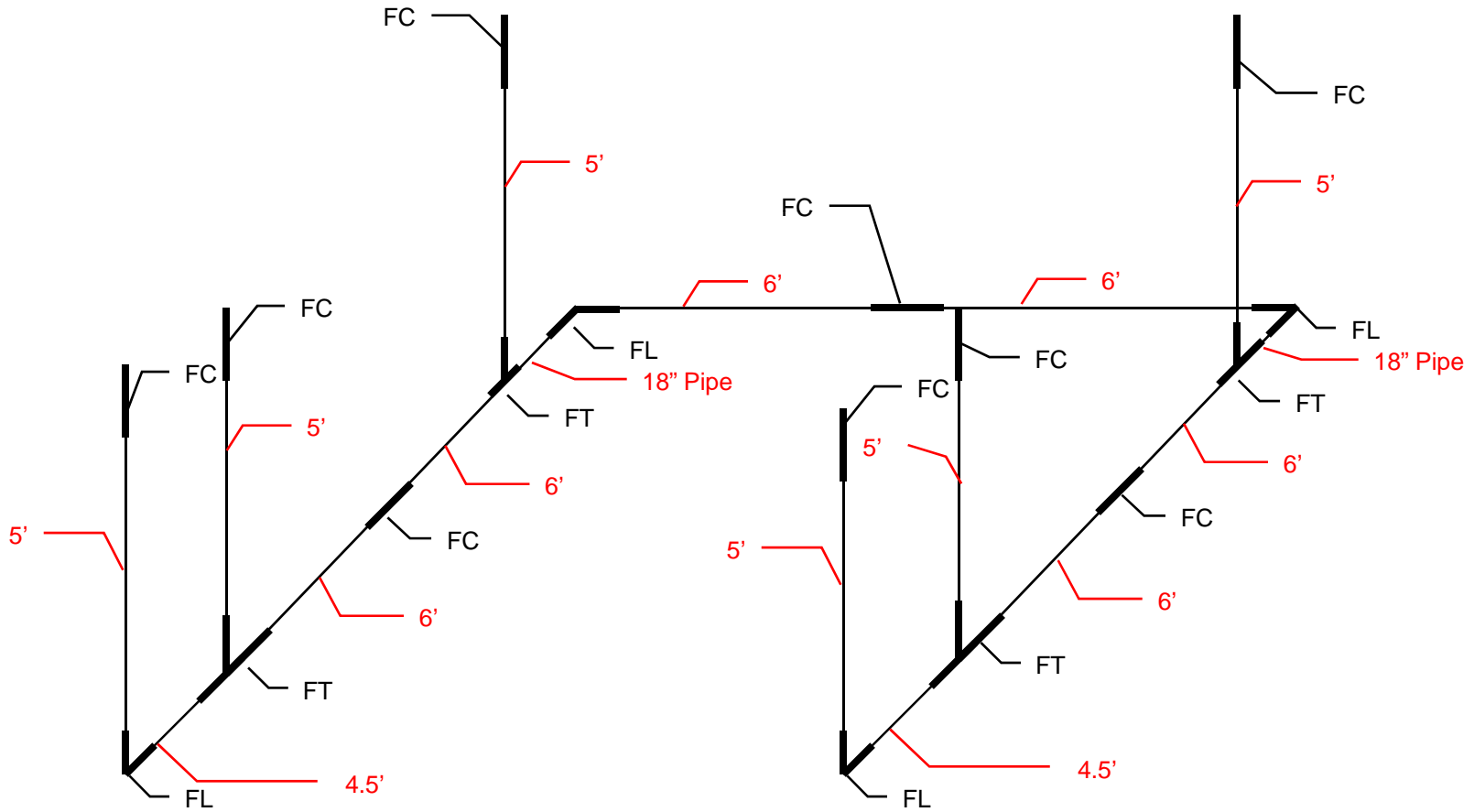
Notes:

- 12 vertical pipes are 5' long, the cage is 10' 3" tall
- 22 horizontal pipes are 6' long, the cage is 12' wide & 18' deep
- 5 short pipes extend the floor depth 18" behind the screen for safety purposes

Step 1

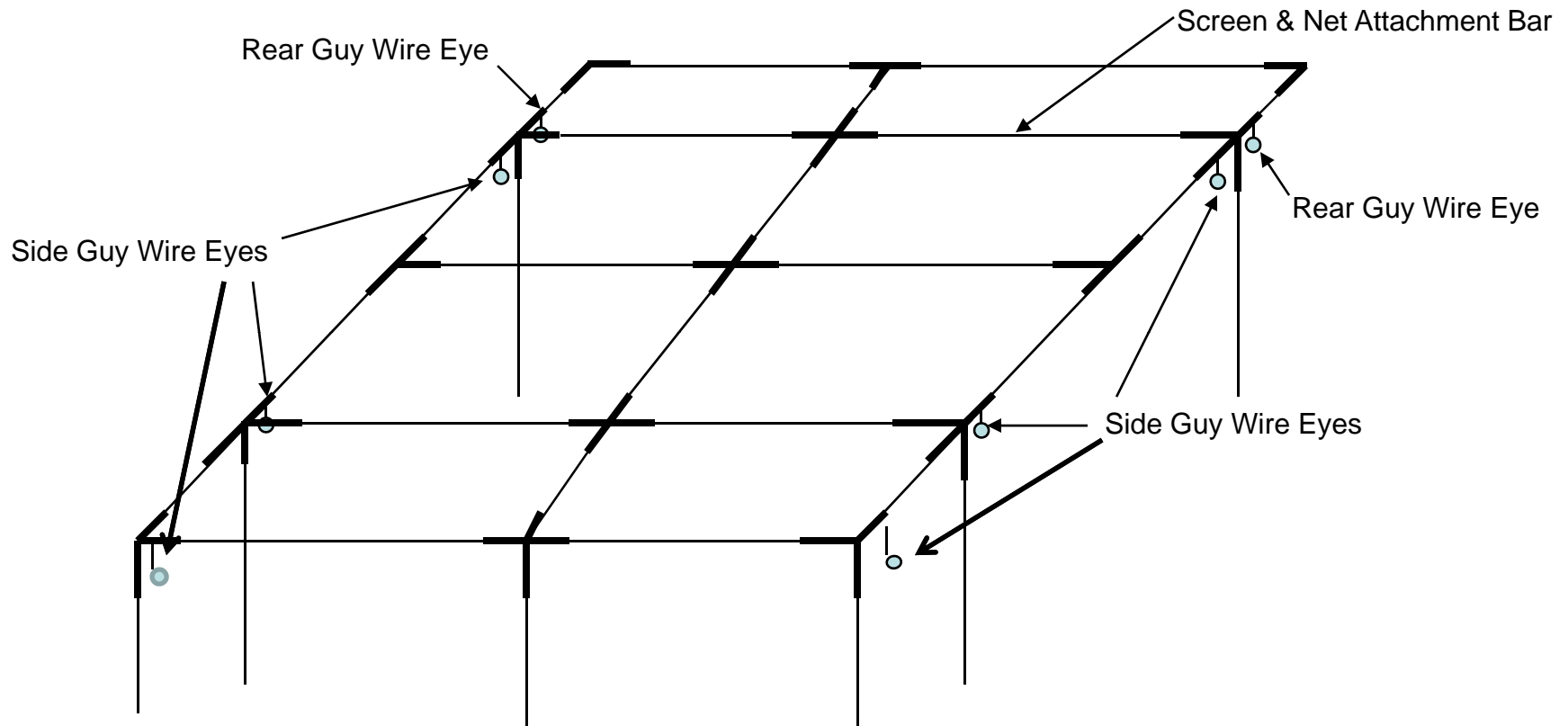
Build Bottom Frame

(Place the frame in the location you plan on using it.)



Step 3

Attach Guy Wires and Projection Screen to Top Frame



1. Unfold cover with the projection screen inside the rear of the cage frame.
2. Place the screen and netting at the back of the frame with the netting on top and attachment tabs facing up.
3. Secure attachment tabs to the Net Attachment bar
4. The projection screen has a rope cord that weaves down the edges and around the pole.

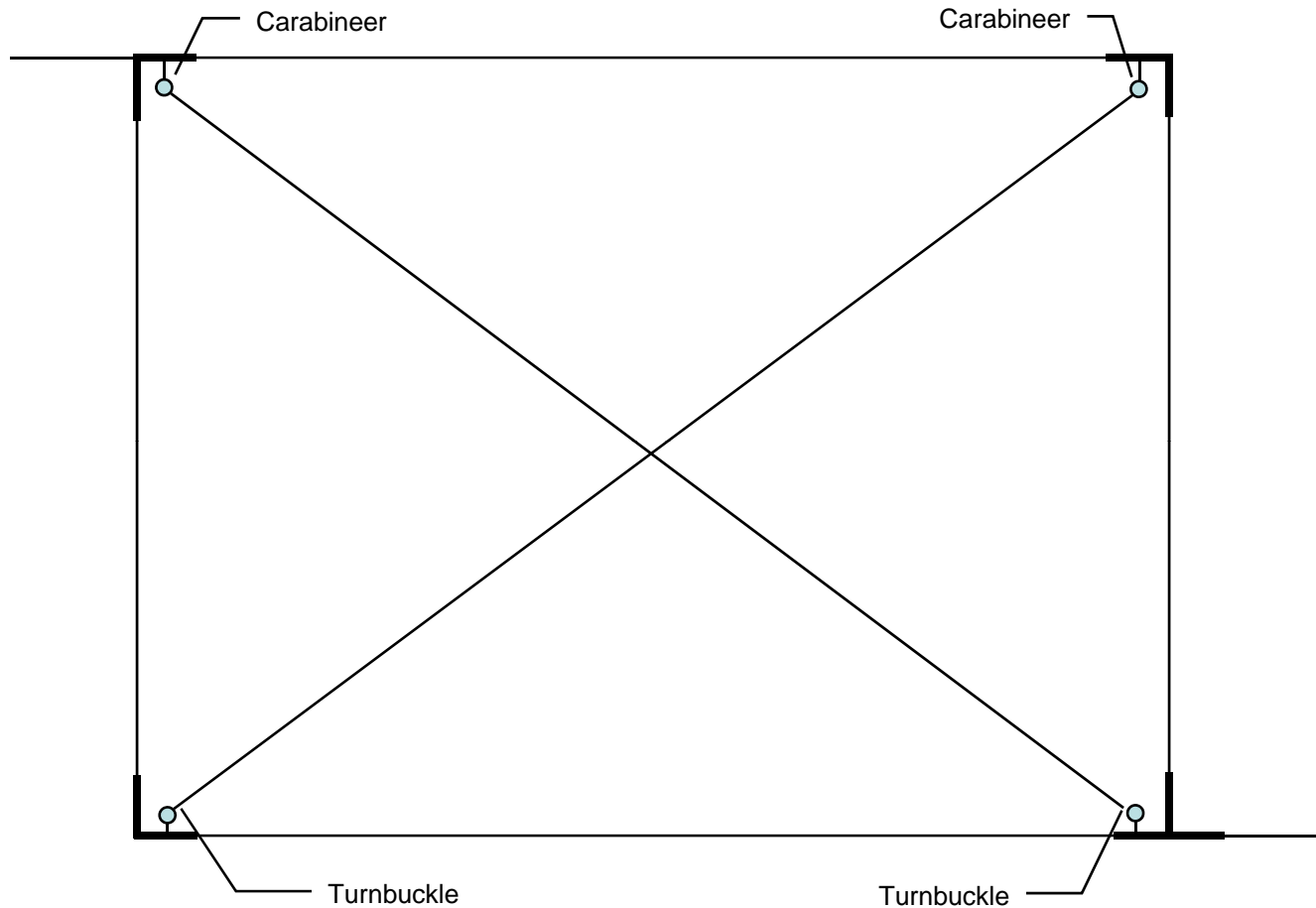
Step 4

Lift the Top Frame Into the Bottom Frame

- 1) Lift top frame by corners and set it into bottom frame (four to six people will be optimal for this operation)
- 2) Make sure all fasteners are fully seated and secure before proceeding.

Step 5

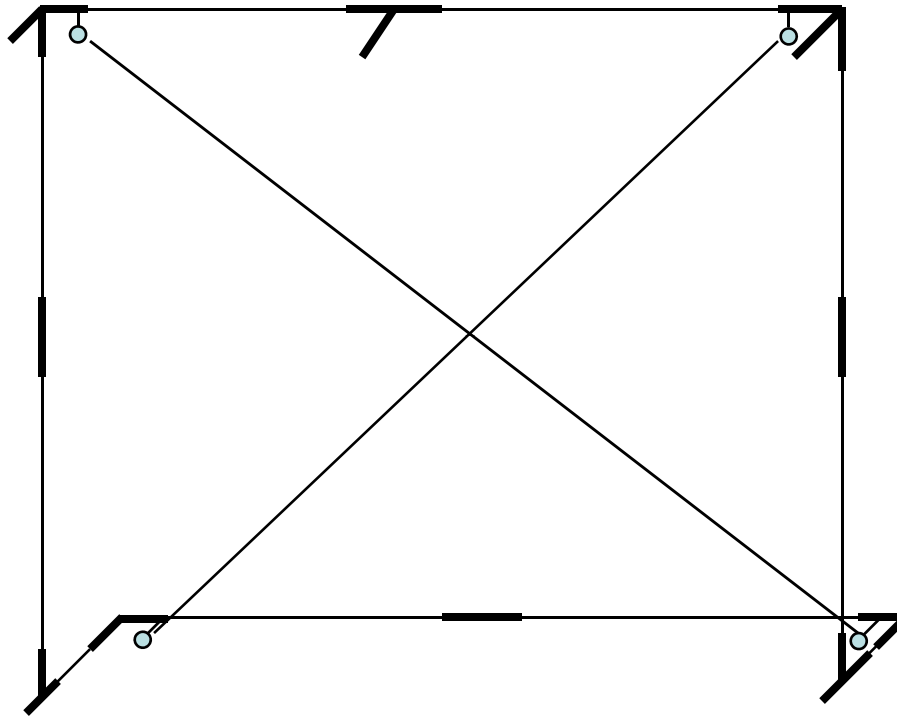
Install Side Guy Wires (Both Sides)



- 1) Attach side guy wires with carabineers at the top on the screw eyes as shown.
- 2) Fully open and attach turnbuckle to bottom screw eyes as shown.
- 3) Do not tighten turnbuckles yet!

Step 6

Install Rear Guy Wires



- 1) Attach rear guy wires with carabineers at the top on the screw eyes as shown.
- 2) Fully open and attach turnbuckle to bottom screw eyes as shown.
- 3) Tighten turnbuckles of all 8 wires starting with the rear so there is tension in wire, do not over tighten or the cage will not be square.
- 4) Tighten turnbuckles on sides after finished tightening rear turnbuckles.

Step 7

Install Cage Cover on Top Frame

1. Unfold the outer cage cover.
 2. Locate the P3ProSwing Logo. This is the center of the front of the cage.
 3. Gather the fabric from the back of the cover to the front on each side (this requires 2 people).
 4. Keep in mind the awning is not present so there should be 4'6" of extra fabric at the front.
 5. With a person on each side of the cage, walk the cover back unfurling the fabric as you go.
 6. Place the fitted corners around the two rear cage corners.
 7. Allow the back flap to drape over the rear of the cage.
 8. At the front of the cage fold the extra fabric for the projection awning over the top of the cage front to allow access to the fittings after the cage frame has been lifted.
 9. This is a good time to secure the wiring for the projector to the frame. Allow extra wiring for the proper distance and strain relief of the projector mounting location.
- (note: secure projector wires to frame using electrical tape to keep them out of the swing path.)

Step 8

Finish Installation of the Projection Screen

- 1) Finish running the rope through the grommets and around the back vertical poles and tie securely.
- 2) Slip the outer cover under the frame and wrap around front poles securing with the Velcro that runs down the edge.
- 3) Make any necessary adjustments.